



# TIIG

INJURY SURVEILLANCE IN THE NORTH WEST OF ENGLAND

## Injury attendances to Royal Bolton Hospital Emergency Department

### April 2012 to March 2013

This report summarises recorded injury attendances to Royal Bolton Emergency Department (ED) between April 2012 and March 2013.

Between April 2012 and March 2013 there were 42,267 injury attendances to Royal Bolton ED. Males accounted for over half (52%) of these attendances. The month with the highest attendances was January (n=4,018) with June having the lowest (n=3,059) (**Figure 1**). Of the specified injury groups falls (9%) accounted for the highest proportion followed by road traffic collision (RTC) (4%), assault (3%) and sports injury (3%) (**Table 1**).

The highest proportion of attendances was for persons aged 20 to 34 (25%) and 35 to 49 (18%) years (**Figure 2**). Over a half (51%) of fall attendees were aged 65 or over while over a quarter (26%) of burns and scalds injuries were sustained by 0 to 4 year olds. Nearly four in ten (38%) of RTC attendees were aged 20-34 (**Figure 3**).

**Table 2** shows the ethnicity of attendees to Royal Bolton ED. Over seven in ten (71%) were white.

The disposal of a patient can give an indication of the severity of the injuries sustained. Almost four in ten (39%) were discharged and 16% were admitted (**Table 3**). Over four in ten (43%) of burns and scalds attendees were referred, while over a quarter (26%) of deliberate self-harm (DSH) attendees were

admitted. Close to half (46%) of assault attendees were discharged. Almost a quarter (23%) of fall attendees were admitted (**Table 4**).

**Table 5** shows the arrival methods of attendances at Royal Bolton ED. Almost three-quarters (74%) of attendees arrived on foot, whilst a quarter (25%) arrived by ambulance.

**Table 6** shows the location of the incident of the main injury groups (excluding other injury). Almost six in ten (59%) of injuries occurred in the home. Close to four-fifths (78%) of burns and scalds occurred in the home. Almost one in five (19%) of sports injuries occurred in an educational establishment.

**Table 7** presents data for assault attendees to Royal Bolton ED. Males represent seven in ten (70%) of assault attendances, whilst almost half (46%) of assault attendees were aged 20 to 34. Almost half (46%) of assault attendees arrived by ambulance.

Figure 1: Royal Bolton ED: Total injury attendances by gender and month, April 2012 to March 2013

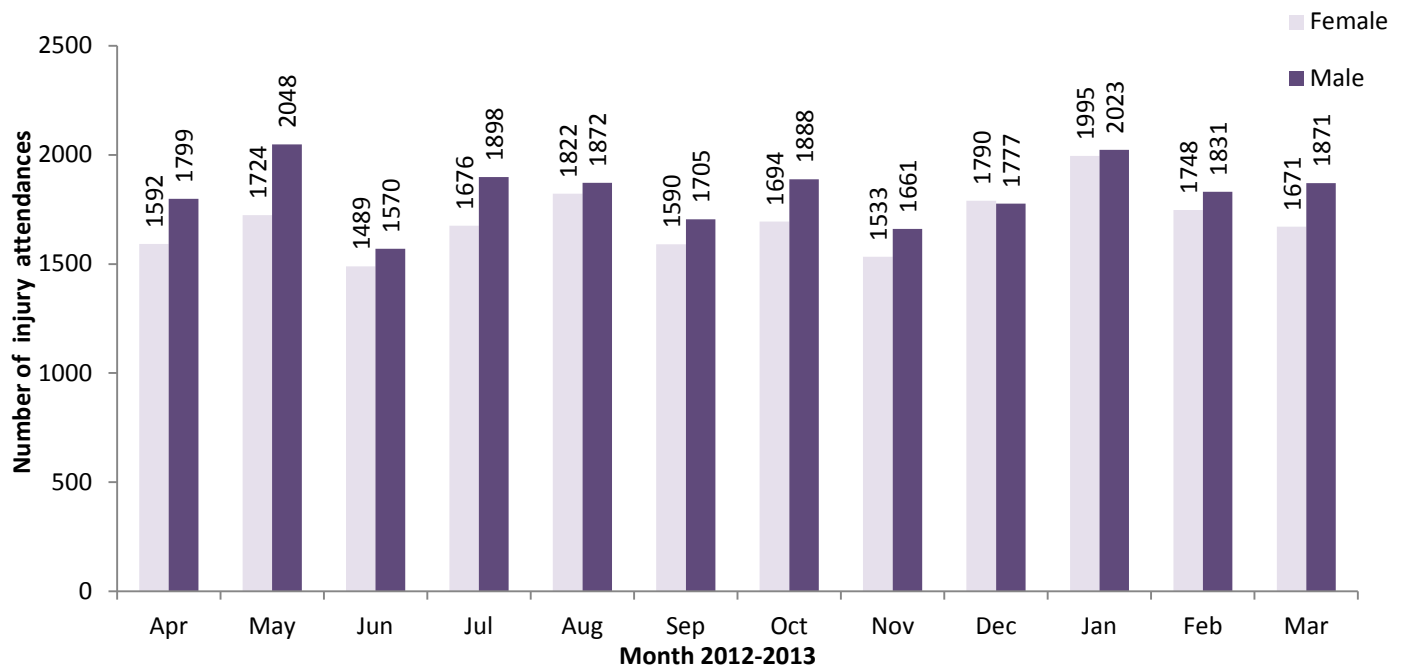


Table 1: Royal Bolton ED: Total injury attendances by injury group and month, April 2012 to March 2013

Injury group	Apr	May	Jun	Jul	Aug	Sep	Oct	Nov	Dec	Jan	Feb	Mar	Total	%
Other injury	2578	2764	2221	2657	2768	2447	2722	2426	2777	3178	2868	2714	32120	76
Fall	296	361	337	344	298	322	306	290	317	352	307	340	3870	9
RTC	153	183	136	116	147	151	154	134	146	161	125	106	1712	4
Assault	94	120	116	119	118	111	109	101	123	101	81	97	1290	3
Sports injury	105	154	78	110	79	89	108	80	60	66	74	112	1115	3
Bites and stings	70	82	89	133	151	82	88	69	43	47	37	57	948	2
Burns and scalds	61	70	52	52	95	55	64	72	66	77	55	82	801	2
DSH	34	38	30	43	38	38	31	22	35	36	32	34	411	1
<b>Total</b>	<b>3391</b>	<b>3772</b>	<b>3059</b>	<b>3574</b>	<b>3694</b>	<b>3295</b>	<b>3582</b>	<b>3194</b>	<b>3567</b>	<b>4018</b>	<b>3579</b>	<b>3542</b>	<b>42267</b>	<b>100</b>

Figure 2: Royal Bolton ED: Total injury attendances by age group and month, April 2012 to March 2013

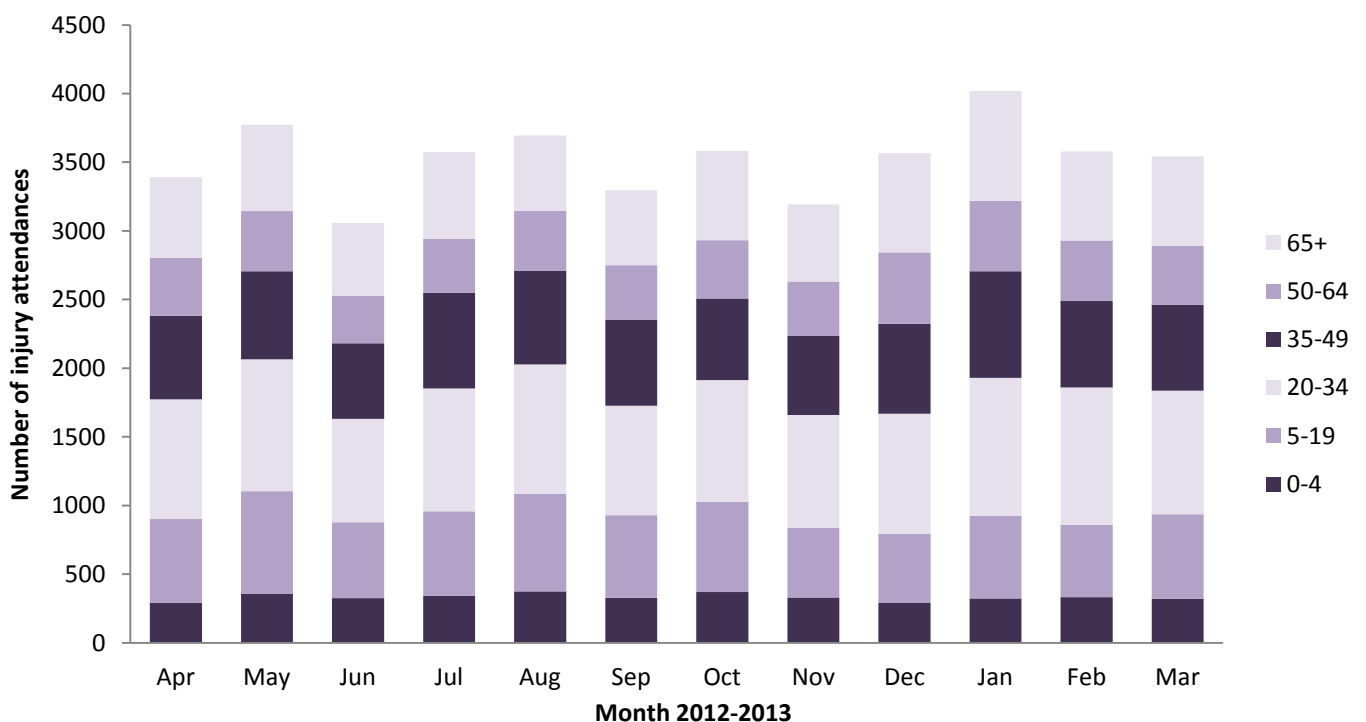


Figure 3: Royal Bolton ED: Total injury attendances by age group and injury group (excluding other injury), April 2012 to March 2013

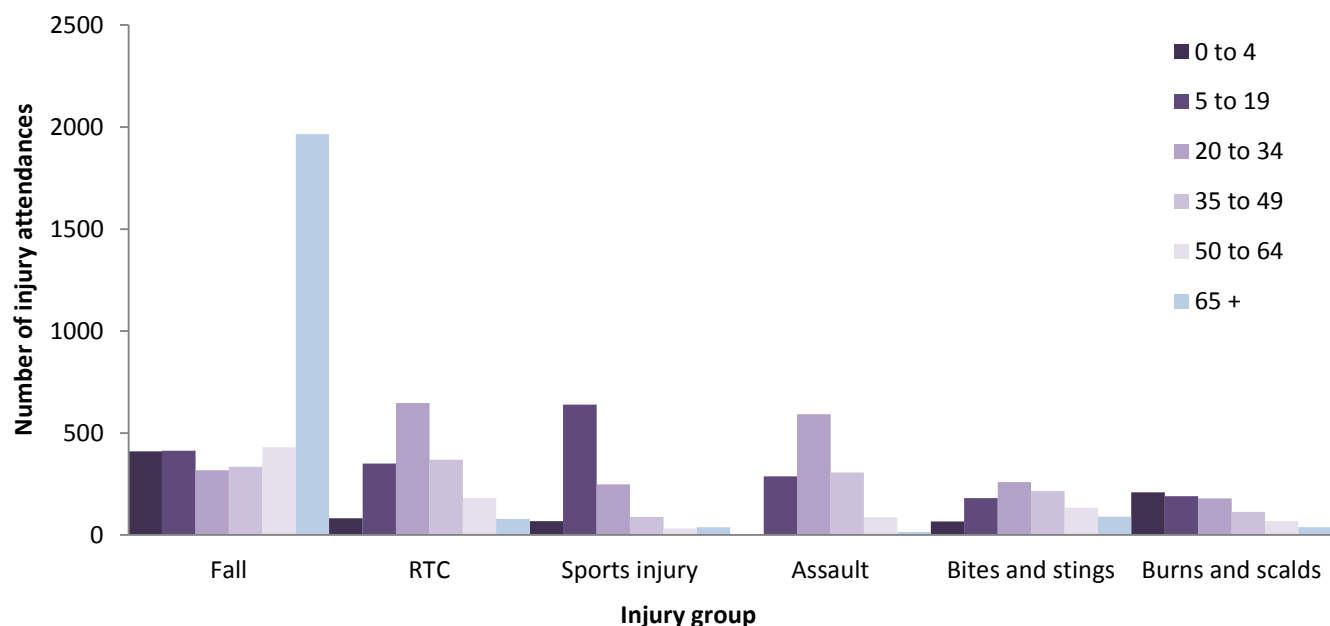


Table 2: Royal Bolton ED: Total injury attendances by ethnicity and month, April 2012 to March 2013<sup>1</sup>

Ethnicity	Apr	May	Jun	Jul	Aug	Sep	Oct	Nov	Dec	Jan	Feb	Mar	Total	%
White	2402	2630	2095	2512	2561	2287	2540	2279	2592	2882	2544	2535	29859	71
Pakistani	356	457	402	414	443	393	369	344	325	422	364	335	4624	11
Not stated	332	375	299	356	387	346	338	301	318	361	314	356	4083	10
Black	109	102	89	111	95	110	115	87	106	106	119	96	1245	3
Any other ethnic group	98	115	82	107	97	82	109	85	110	111	115	117	1228	3
Mixed	32	29	27	23	40	25	27	28	25	34	38	29	357	1
Any other Asian background	19	24	19	19	30	16	35	23	36	45	36	31	333	1
Indian	22	25	24	16	15	20	22	16	24	27	29	22	262	1
Chinese	14	8	17	11	20	11	21	21	25	22	17	17	204	0
Bangladeshi	***	***	***	***	***	***	<10	<10	***	<10	***	***	38	0
Not recorded	***	***	***	***	***	***	***	***	***	***	***	***	34	0
<b>Total</b>	<b>3388</b>	<b>3769</b>	<b>3056</b>	<b>3573</b>	<b>3692</b>	<b>3293</b>	<b>3577</b>	<b>3187</b>	<b>3563</b>	<b>4013</b>	<b>3577</b>	<b>3541</b>	<b>42267</b>	<b>100</b>

Table 3: Royal Bolton ED: Total injury attendances by method of disposal and month, April 2012 to March 2013

Disposal	Apr	May	Jun	Jul	Aug	Sep	Oct	Nov	Dec	Jan	Feb	Mar	Total	%
Discharged	1365	1528	1197	1407	1493	1350	1547	1136	1288	1341	1333	1330	16315	39
Referral/follow-up	1235	1441	1149	1353	1430	1258	1252	1256	1338	1652	1373	1376	16113	38
Admitted	530	562	466	526	491	467	538	547	657	765	651	621	6821	16
Other	261	241	247	288	280	220	245	255	284	260	222	215	3018	7
<b>Total</b>	<b>3391</b>	<b>3772</b>	<b>3059</b>	<b>3574</b>	<b>3694</b>	<b>3295</b>	<b>3582</b>	<b>3194</b>	<b>3567</b>	<b>4018</b>	<b>3579</b>	<b>3542</b>	<b>42267</b>	<b>100</b>

Table 4: Royal Bolton ED: Total injury attendances by method of disposal and injury group (excluding other injury), April 2012 to March 2013

Disposal	Assault		Bites and stings		Burns and scalds		DSH		Fall		RTC		Sports injury		Total	
	n	%	n	%	n	%	n	%	n	%	n	%	n	%	n	%
Discharged	592	46	512	54	374	47	80	19	1339	35	921	54	526	47	4344	43
Referral/follow-up	440	34	357	38	343	43	145	35	1232	32	654	38	477	43	3648	36
Admitted	39	3	16	2	13	2	108	26	897	23	56	3	72	6	1201	12
Other	219	17	63	7	71	9	78	19	402	10	81	5	40	4	954	9
<b>Total</b>	<b>1290</b>	<b>100</b>	<b>948</b>	<b>100</b>	<b>801</b>	<b>100</b>	<b>411</b>	<b>100</b>	<b>3870</b>	<b>100</b>	<b>1712</b>	<b>100</b>	<b>1115</b>	<b>100</b>	<b>10147</b>	<b>100</b>

<sup>1</sup> Please note that all numbers less than five have been suppressed in line with patient confidentiality and if there is only one number <5 in a category then two numbers will be suppressed at the next level.

**Table 5: Royal Bolton ED: Total injury attendances by arrival mode and month, April 2012 to March 2013<sup>1</sup>**

Arrival mode	Apr	May	Jun	Jul	Aug	Sep	Oct	Nov	Dec	Jan	Feb	Mar	Total	%
Foot	2528	2807	2297	2667	2835	2516	2686	2417	2551	2849	2638	2623	31414	74
Ambulance	857	957	754	897	852	<780	<900	767	1007	1154	932	912	10754	25
Other	6	8	8	10	7	***	***	10	9	15	9	7	99	0
<b>Total</b>	<b>3391</b>	<b>3772</b>	<b>3059</b>	<b>3574</b>	<b>3694</b>	<b>3295</b>	<b>3582</b>	<b>3194</b>	<b>3567</b>	<b>4018</b>	<b>3579</b>	<b>3542</b>	<b>42267</b>	<b>100</b>

**Table 6: Royal Bolton ED: Total injury attendances by location and injury group (excluding other injury), April 2012 to March 2013<sup>1</sup>**

Incident location	Assault		Bites and stings		Burns and scalds		DSH		Fall		RTC		Sports injury		Total	
	n	%	n	%	n	%	n	%	n	%	n	%	n	%	n	%
Home	642	50	610	64	623	78	328	80	2690	70	566	33	489	44	5948	59
Other	310	24	285	30	127	16	<60	14	911	24	580	34	<130	11	2397	24
Public place	298	23	<40	3	8	1	<25	5	164	4	555	32	164	15	1243	12
Educational establishment	10	1	<10	1	***	0	****	1	66	2	6	0	209	19	302	3
Work	27	2	13	1	36	4	0	0	27	1	***	0	***	0	108	1
Leisure facility	***	0	***	0	<10	1	0	0	<15	0	***	0	126	11	146	1
Not specified	***	0	0	0	0	0	0	0	***	0	***	0	0	0	3	0
<b>Total</b>	<b>1290</b>	<b>100</b>	<b>948</b>	<b>100</b>	<b>801</b>	<b>100</b>	<b>411</b>	<b>100</b>	<b>3870</b>	<b>100</b>	<b>1712</b>	<b>100</b>	<b>1115</b>	<b>100</b>	<b>10147</b>	<b>100</b>

**Table 7: Royal Bolton ED: Total assault attendances by gender, arrival mode, location of incident and age group of attendance, April 2012 to March 2013<sup>1</sup>**

	Assault attendees (n=1,290)		All injury attendees (n=42,267)	
	N	%	N	%
<b>Gender</b>				
Male	907	70		52
Female	383	30		48
<b>Arrival mode</b>				
Ambulance	588	46		25
Foot	690	53		74
Other	12	1		0
<b>Age group</b>				
0 - 4	***	0		9
5 - 19	288	22		17
20 - 34	592	46		25
35 - 49	306	24		18
50 - 64	87	7		12
65 plus	<20	1		18

Published August 2013

Jennifer Brizell (TIIG researcher)

Centre for Public Health, Faculty of Education, Health & Community, Liverpool John Moores University  
2<sup>nd</sup> Floor, Henry Cotton Campus, 15-21 Webster Street, Liverpool, L3 2ET

Tel: 0151 231 4500 Email: [j.s.brizell@ljmu.ac.uk](mailto:j.s.brizell@ljmu.ac.uk)

Website: [www.tiig.info](http://www.tiig.info) (please note all data requests should be made through the TIIG website)

<sup>1</sup> Please note that all numbers less than five have been suppressed in line with patient confidentiality and if there is only one number <5 in a category then two numbers will be suppressed at the next level.